

Lighting upgrade to allow compliance with competition rules

Ebbw Vale Cricket Club, Ebbw Vale, Wales



We demonstrated our own-brand LED low-bay lights which have a 90 degree beam with a defined cut-off. The client agreed that this gave wide and uniform illumination without creating glare when viewed from the side (ie from the batting positions).

We created a 3d simulation of the hall to create a layout which would give the very uniform light-levels required by the ECB.

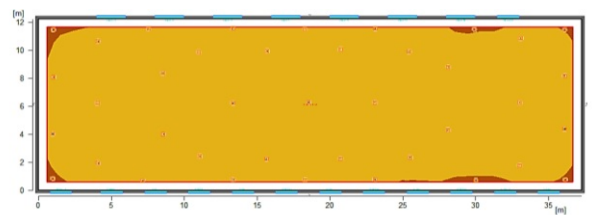


In design we cooperated closely with the England and Wales Cricket Board (ECB). They wanted the hall to be able to offer lighting to the following standard for high-level team events:

Design illumination: 750 lux average

Design uniformity: min/ave = 0.8

Only 40% of this light-level was needed for junior practice so dimming was needed.



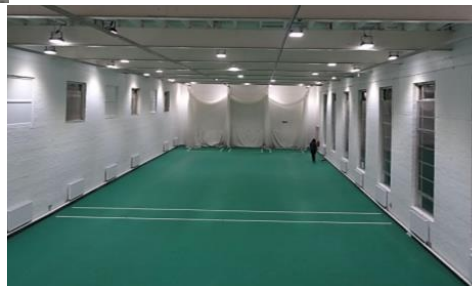
General	
Calculation algorithm used	Average indirect fraction
Height of evaluation surface	0.25 m
Maintenance factor	0.88
Total luminous flux of all lamps	531921 lm
Total power	5850 W
Total power per area (457.30 m ²)	12.79 W/m ² (1.44 W/m ² /100lx)



Our lights with Philips LEDs are very efficient (now over 140lm/watt).

We also suggested the walls needed painting to improve reflectance.

This is the first installation in N Europe using this new DALI microwave control unit with convenient handheld remote-control (we have used this several times since). We have fitted this supplier's microwave sensors and dimming controllers before and found them to be reliable, accurate and well-priced with a 5yr UK-based warranty.



"We have had really favourable comments about them... ..everyone seems to be very impressed."

Nick Pepper, Club Secretary

Contact: E: nickpep1@sky.com M: 07969 240274